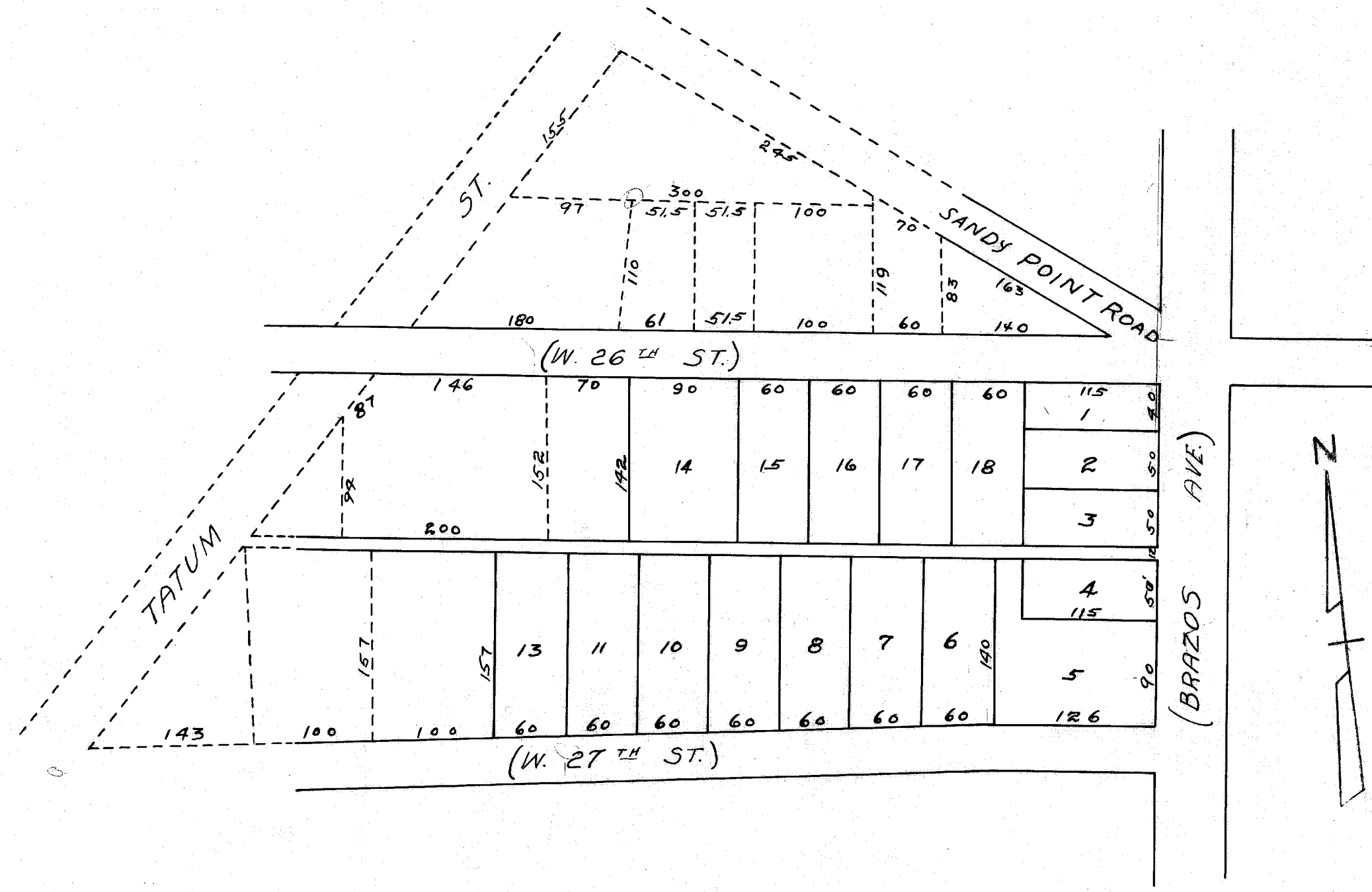


HIGHLAND  
12/1/1924



HIGHLAND ADDITION  
 D.R. 38 P. 635 12-1-24  
 Scale: 1" = 100'  
 (Seems to have been taken from  
 LERO-HANUS-BROWN-HALL TRACT - Unrecorded)

NOTE:  
 There is no lot 12.  
 Solid lines Show the original Plat.  
 Dotted lines show the Additions.

on map  
 up  
 note